



# GMT MONTHLY MEMBERSHIP PROGRESS REPORT

Results as of: 5/31/2019

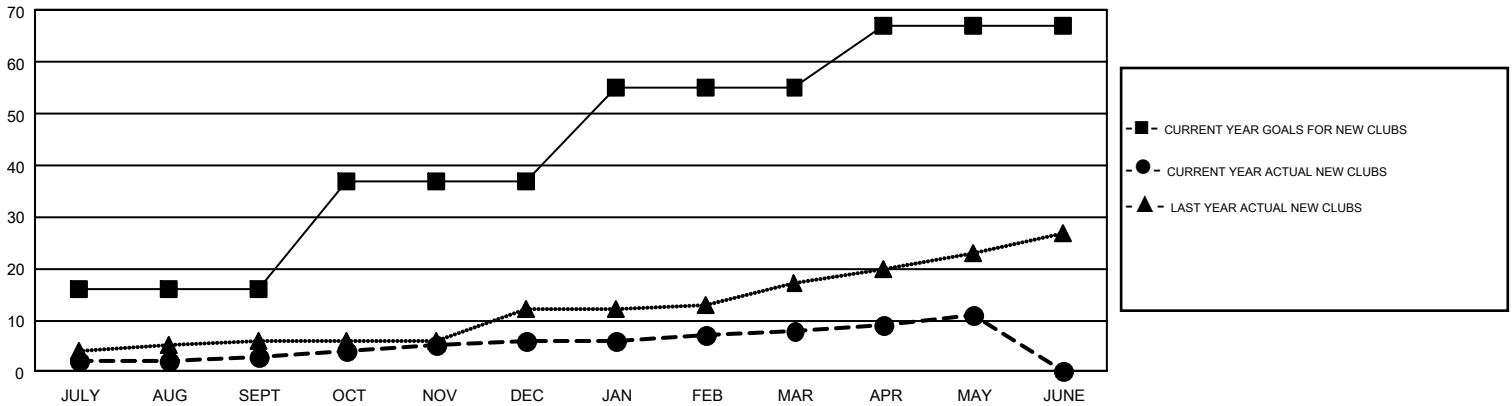
## GMT Constitutional Area 1, Group H

GMT: HOWARD HUDSON

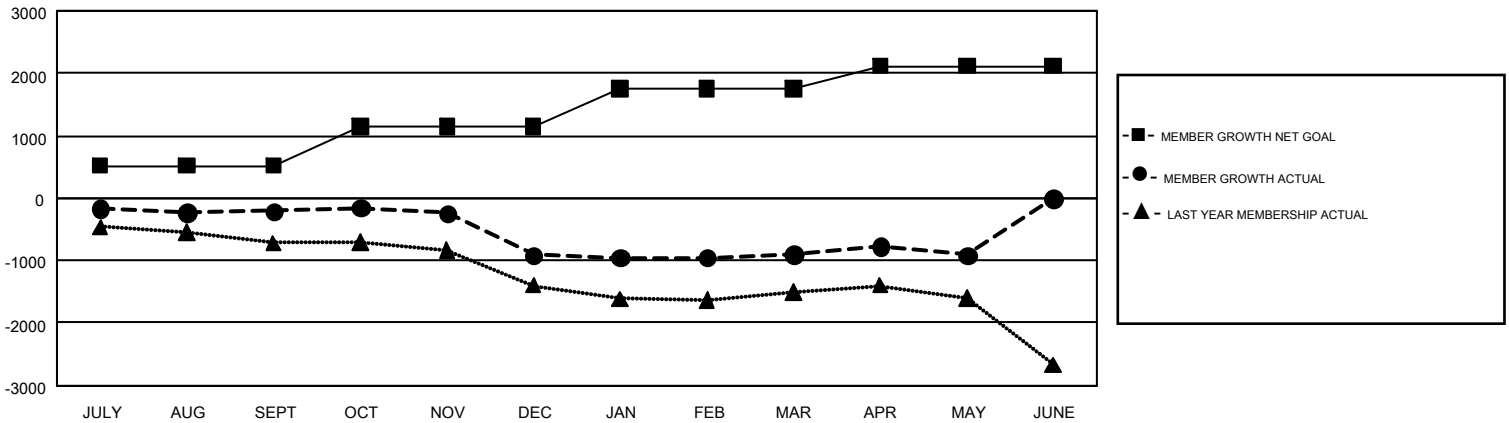
REPORT DOES NOT INCLUDE CLUBS IN UNDISTRICTED AREAS.

Clubs				Members			
RESULTS FOR 2018-2019				RESULTS FOR 2018-2019			
QUARTER	NEW CLUB GOAL	NEW CLUBS	DROPPED CLUBS	QUARTER	MEMBER GROWTH NET GOAL	MEMBER GROWTH ACTUAL	DROPPED MEMBERS ACTUAL (including transfers)
JULY/AUG/SEPT	16	3	12	JULY/AUG/SEPT	521	1,249	1,256
OCT/NOV/DEC	21	3	6	OCT/NOV/DEC	622	1,062	1,655
JAN/FEB/MAR	18	2	11	JAN/FEB/MAR	608	1,151	1,023
APR/MAY/JUNE	12	3	1	APR/MAY/JUNE	365	736	682

GOALS AND ACTUAL NEW CLUBS CUMULATIVE



GOALS AND ACTUAL MEMBERS CUMULATIVE



DROPPED CLUBS: 30	894 CLUBS OF 1,400 ADDED 1 OR MORE NEW MEMBERS	<u>GENDER DISTRIBUTION</u>
<u>DROPPED MEMBERS</u>	<a href="#">CLICK HERE FOR CUMULATIVE MEMBERSHIP DATA</a>	MALE            22,739 (61.70%)
DECEASED            450		FEMALE        14,117 (38.30%)
CLUB CANCELLED      151		TOTAL FAMILY UNIT MEMBERS            7,544
OTHER                    4,014		FAMILY MEMBERS PAYING HALF DUES            3,903
TOTAL                    4,615		